
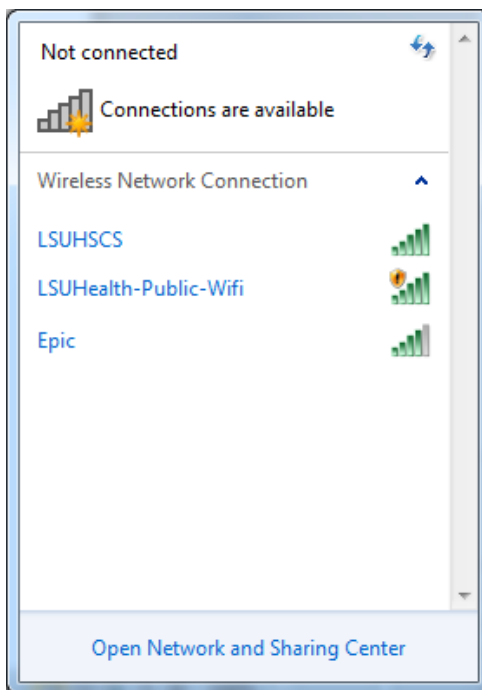


Contents

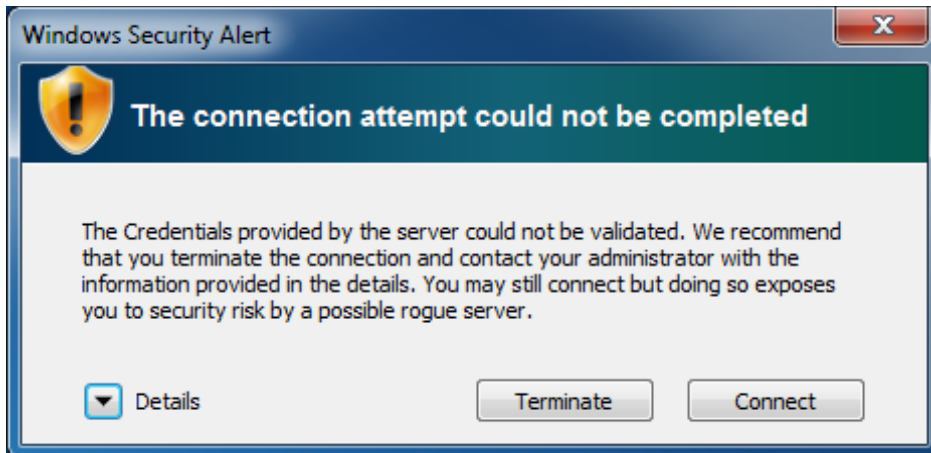
| | |
|--|----|
| Automatic Setup | 1 |
| Manual Setup | 2 |
| Installing the Wireless Certificates | 18 |

Automatic Setup

1. Click on the Wireless icon in your system tray that looks like .
2. You will see a list of available networks.



3. Click on "**Alexcscoap**", be sure the *Connect Automatically* box is checked and click *Connect*.
4. You should receive a *Windows Security Alert*. Click *Connect*.

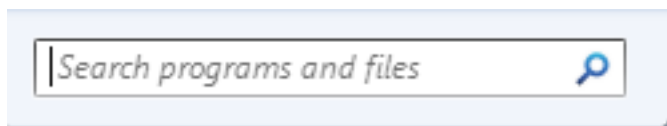


5. You may receive the *Windows Security Alert* twice. Click *Connect* both times.
6. Once this is done, you should be successfully connected to the “**Alexcscoap**” network.

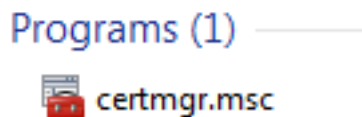
[Return to Table of Contents](#)

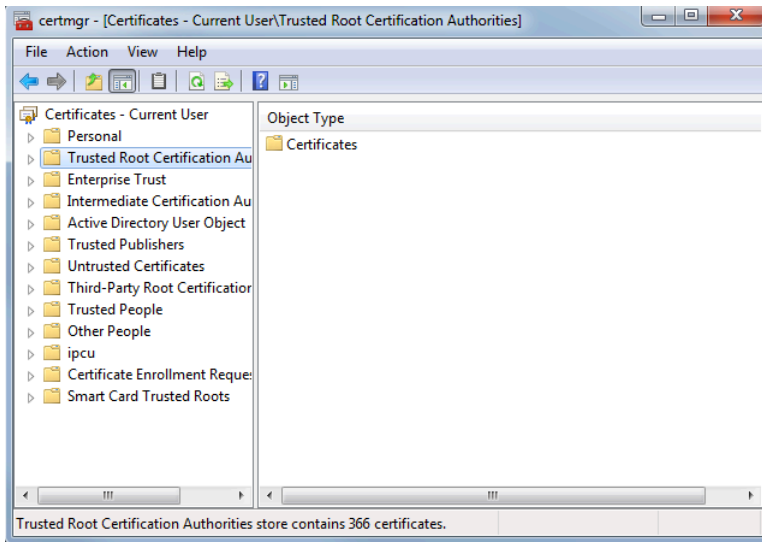
Manual Setup

1. Download the Wireless Certificate file from the Information Technology website.
2. Click on *Start* then search for **certmgr.msc** from the *Search programs and files* box in the bottom-left corner of the Start menu.

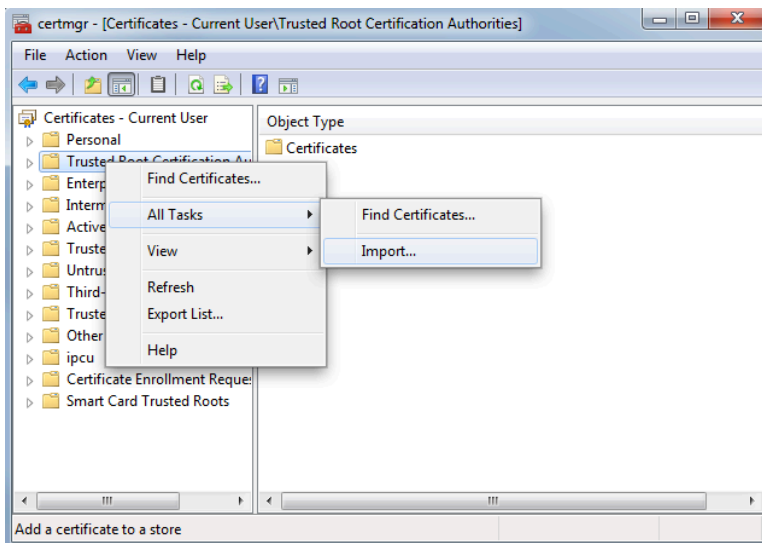


3. Open **certmgr.msc**.

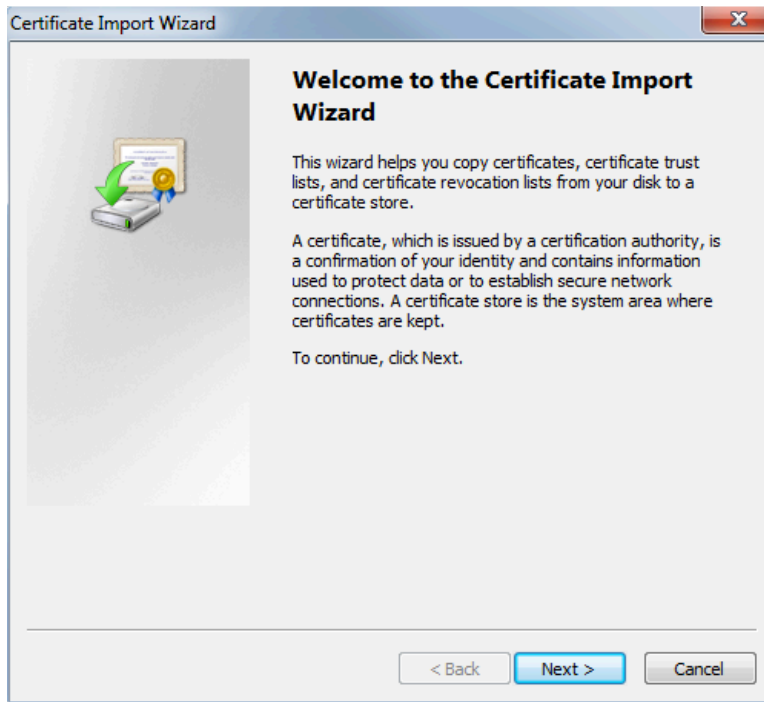




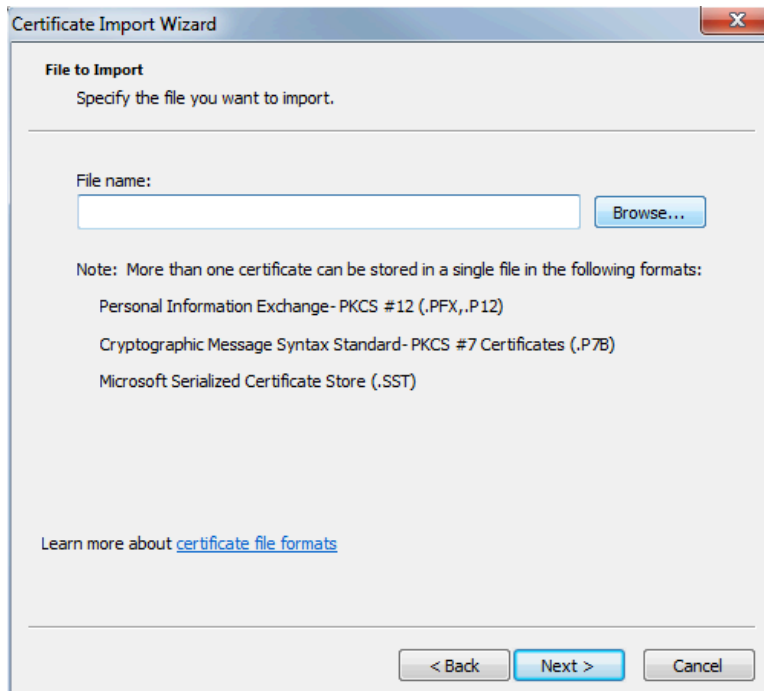
4. Right-click on *Trusted Root Certification Authorities* and choose *All Tasks* and then choose *Import*.



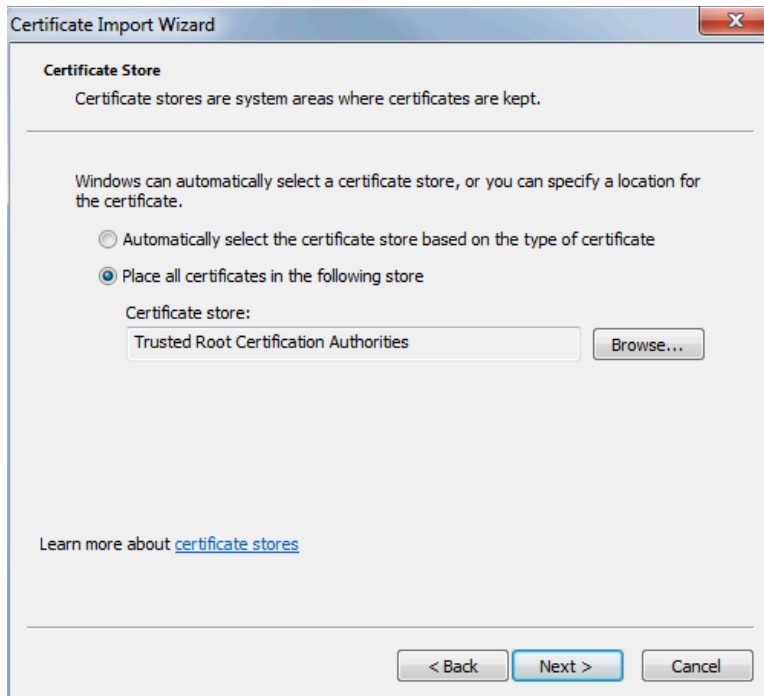
5. Click *Next*.



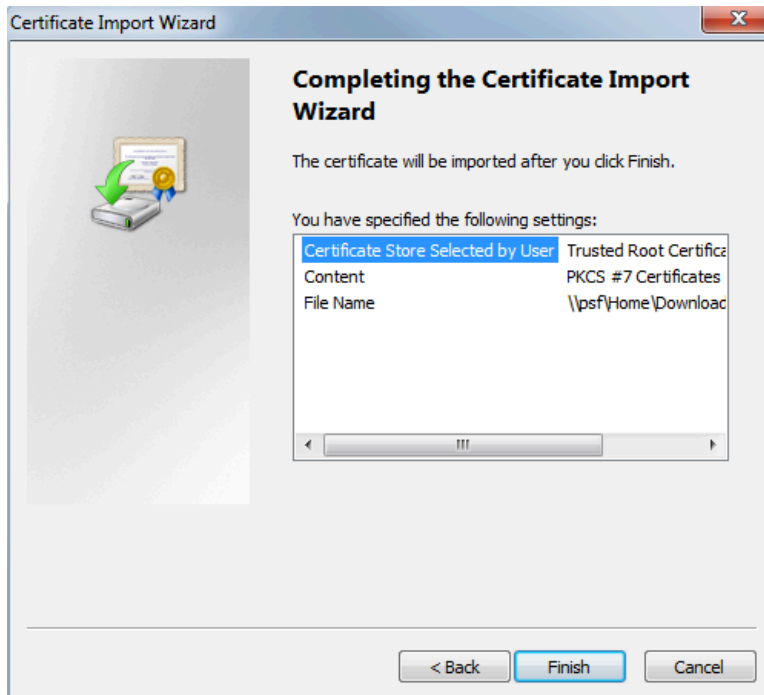
6. Click *Browse* and locate the **wirelesscertchain.p7b** file you downloaded and click *Next*.



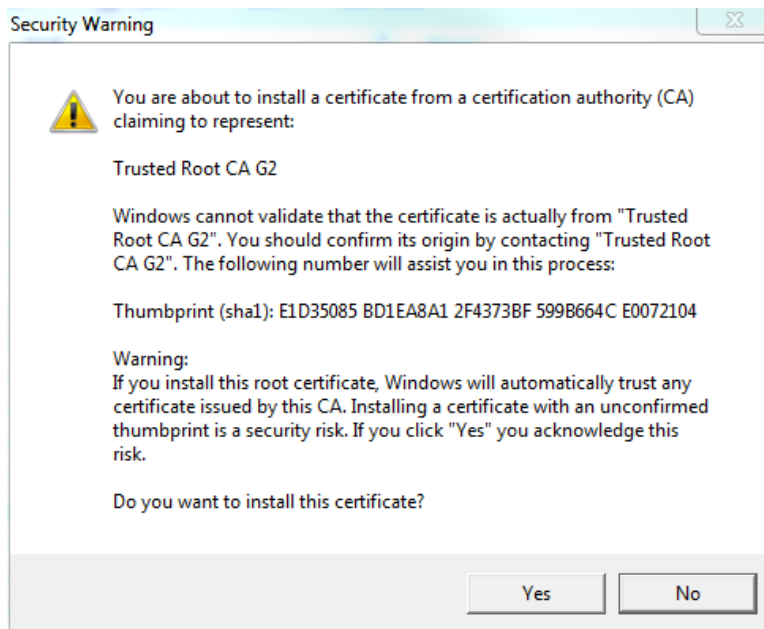
7. Click *Next*.



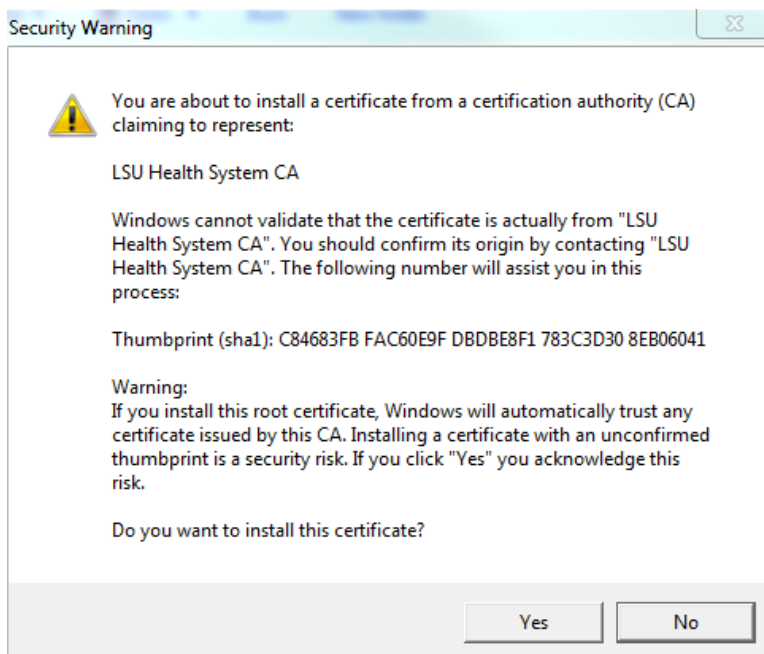
8. Click *Finish*.



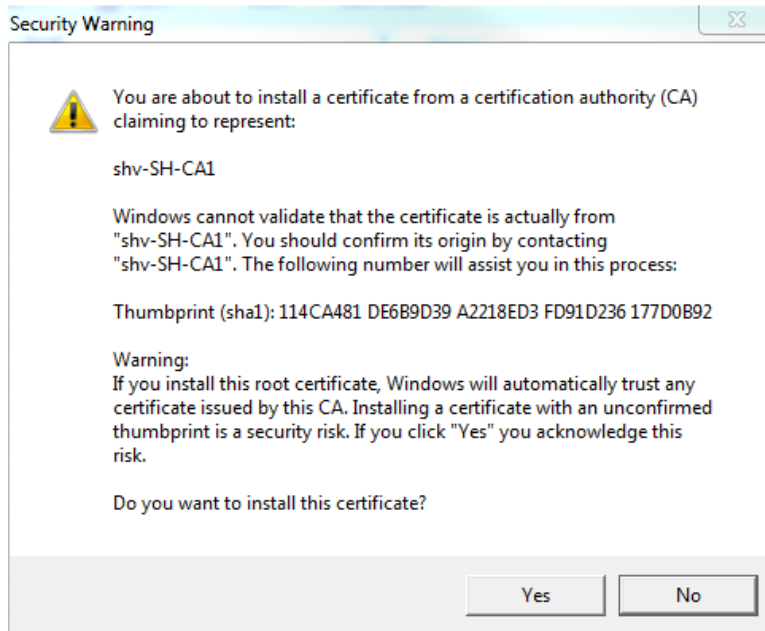
9. Click Yes.



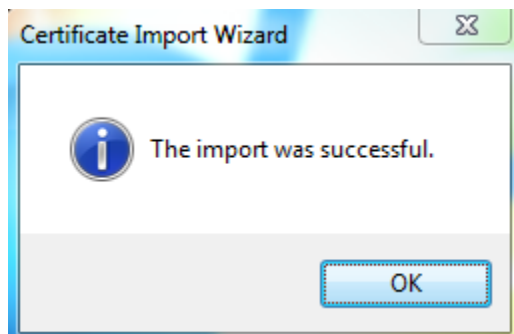
10. Click Yes again.



11. Click Yes again.

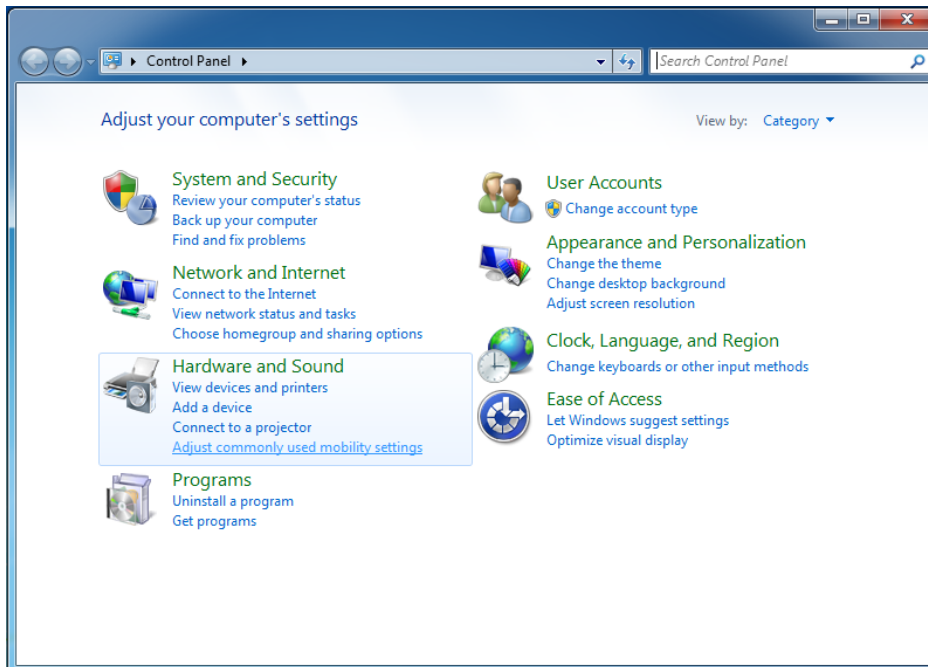


12. Click *OK*.

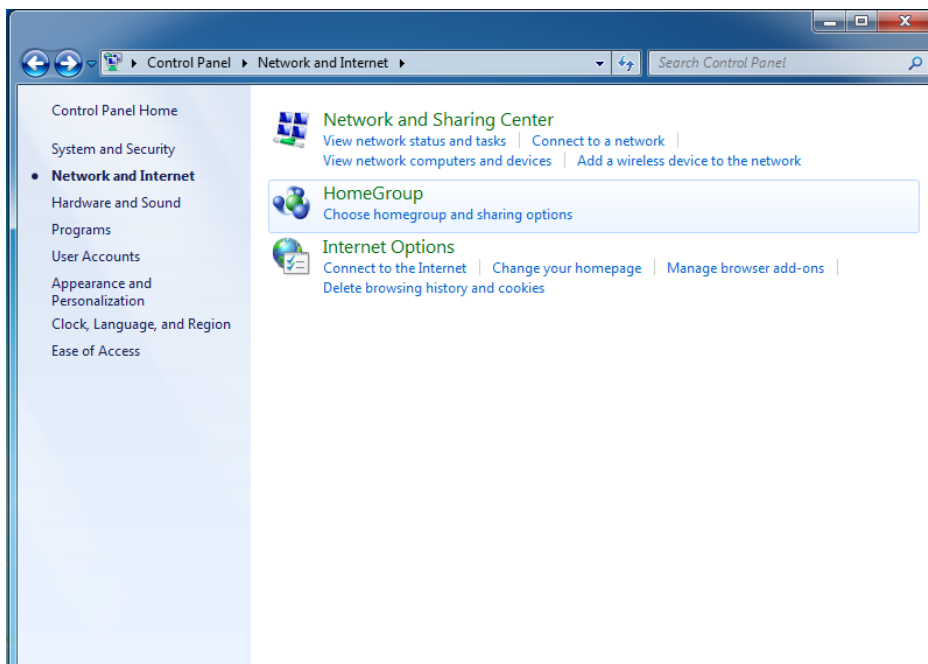


13. Close the certmgr window.

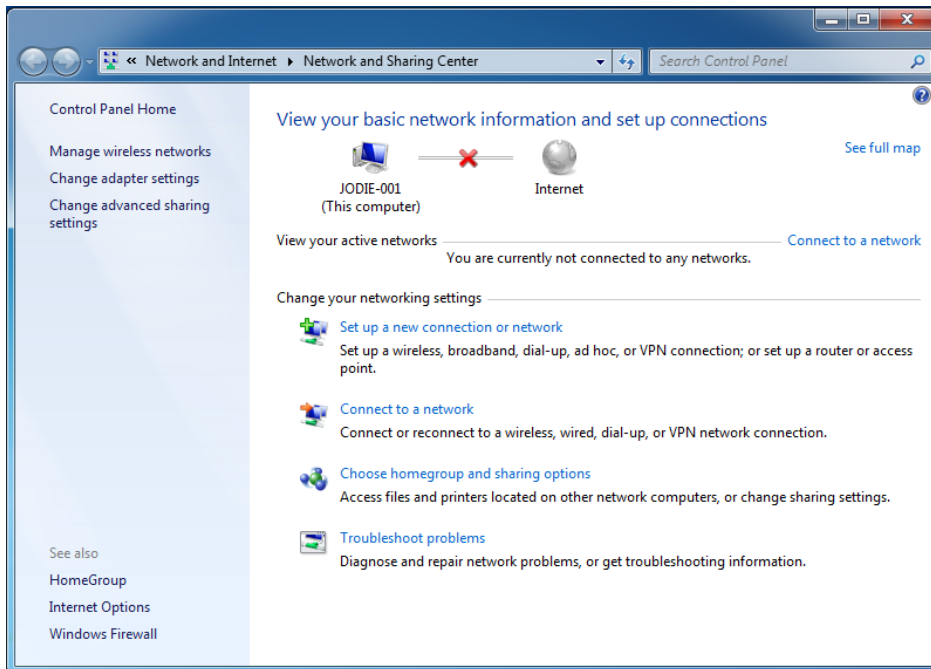
14. Click *Start* and then *Control Panel*.



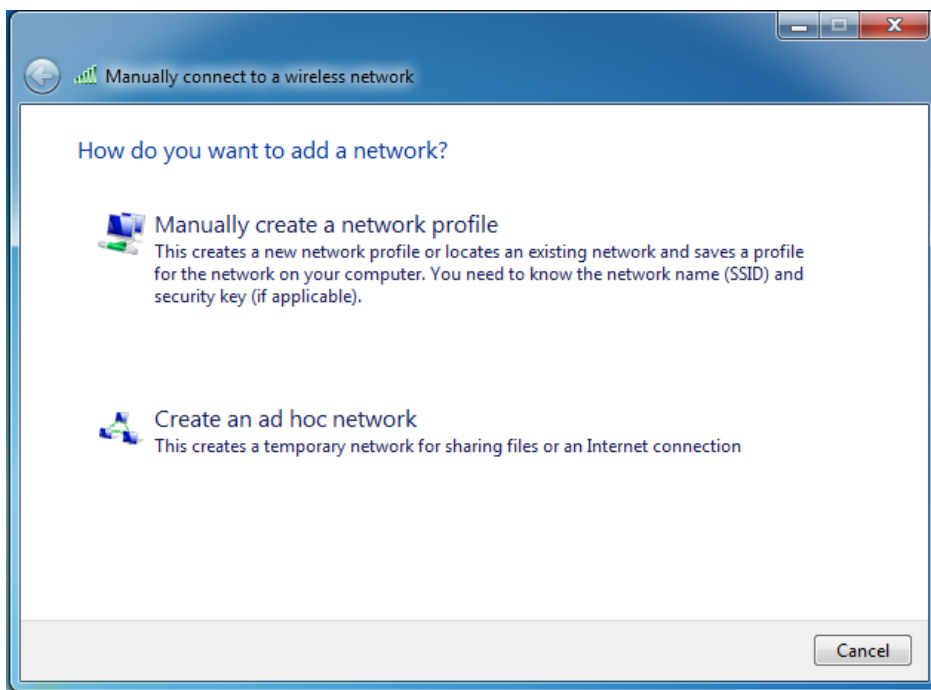
15. Click *Network and Internet*.



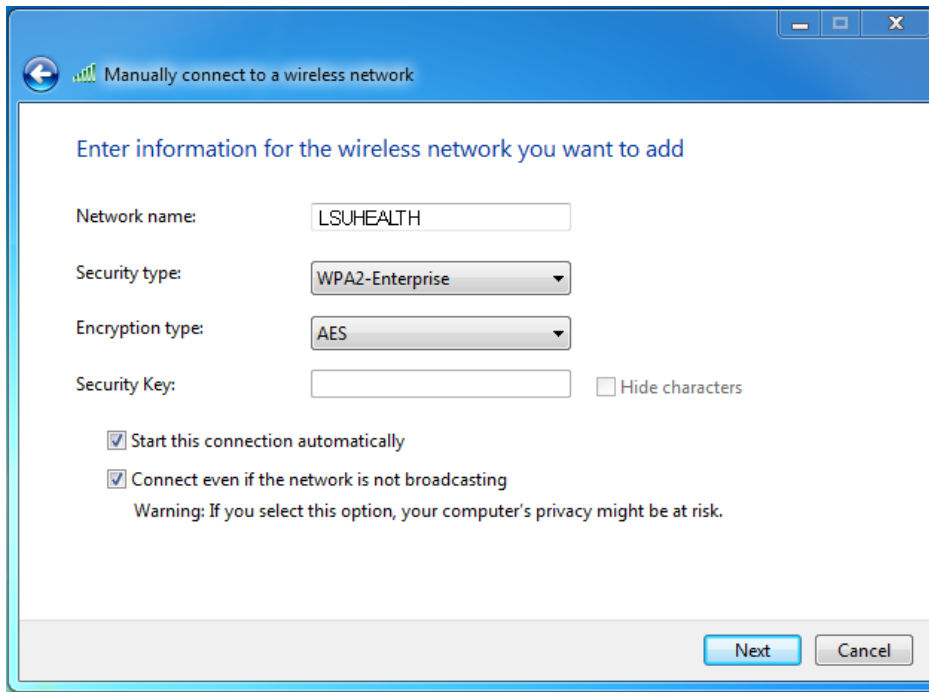
16. Click *Network and Sharing Center*.



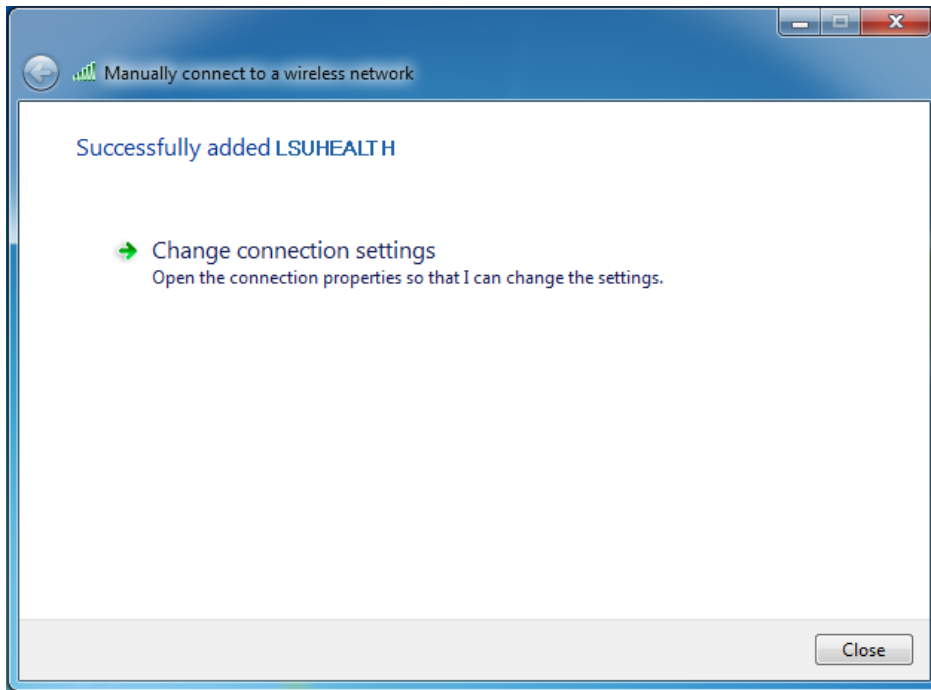
17. Click *Manage wireless networks* on the left.
18. Click *Add* at the top.



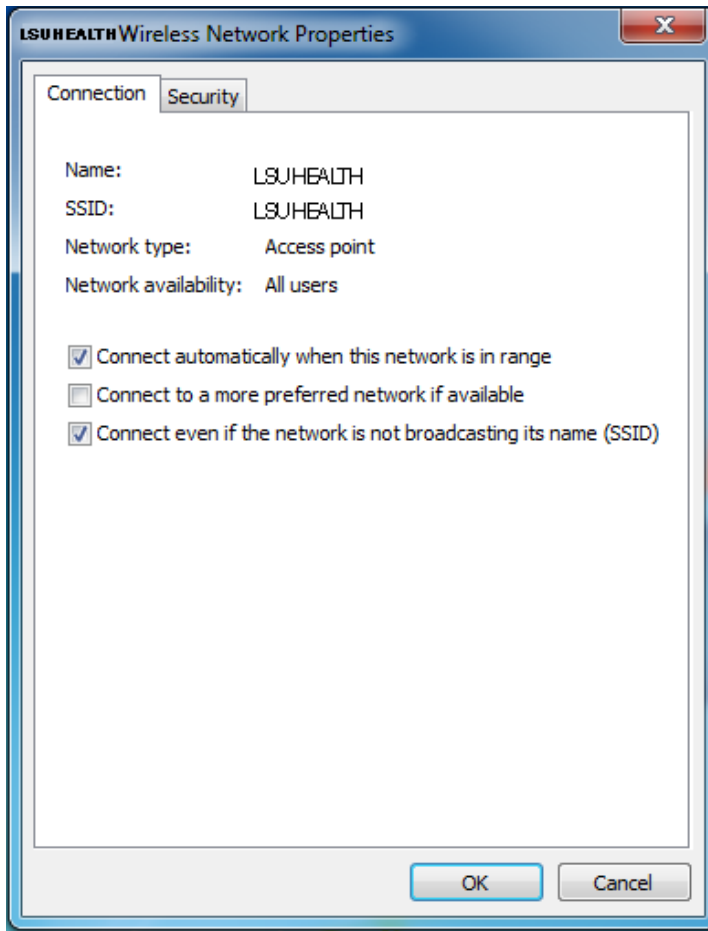
19. Click *Manually create a network profile*.



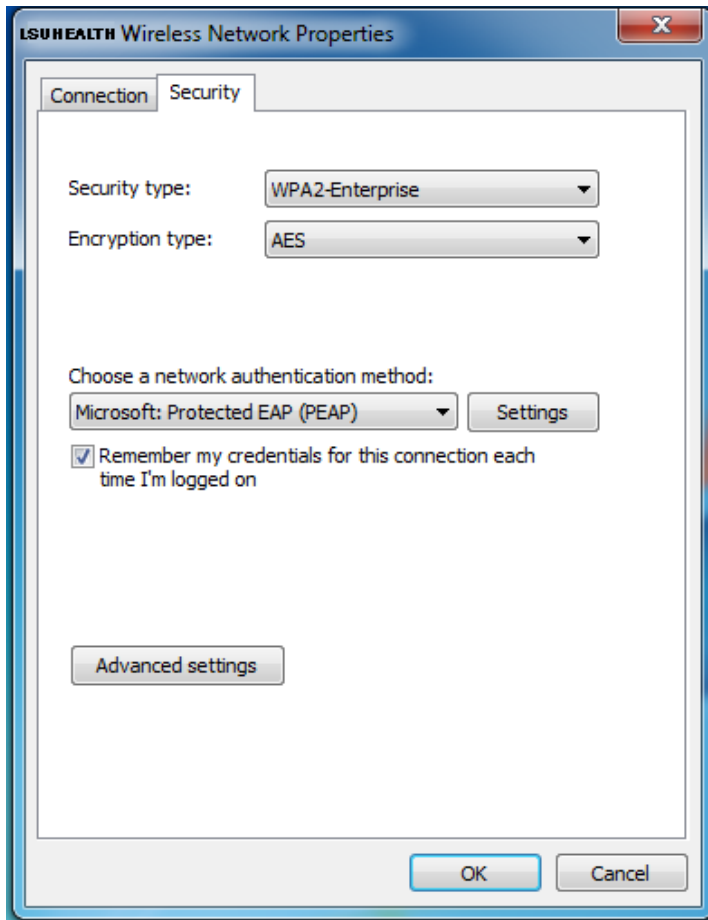
20. Enter **Alexcsoap** as the *Network Name*. **Alexcsoap** must be in all capital letters.
21. Select **WPA2-Enterprise** as the *Security Type* and **AES** as the *Encryption Type*.
22. Check both boxes labeled: *Start this connection automatically* and *Connect even if the network is not broadcasting*.
23. Click *Next*.



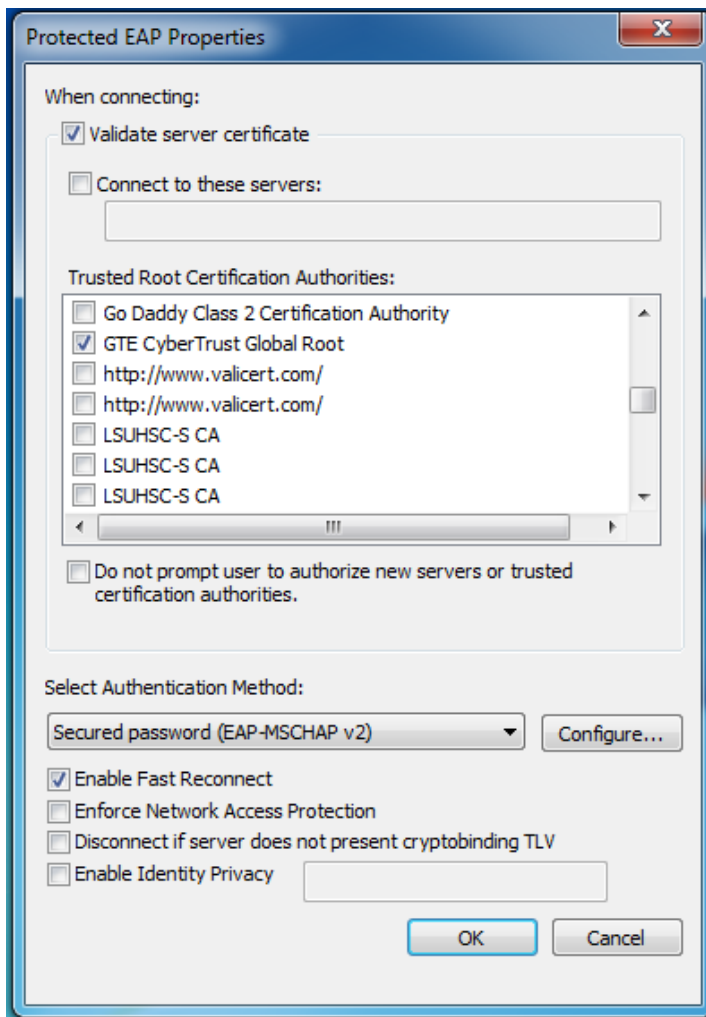
24. Click *Change connection settings*.



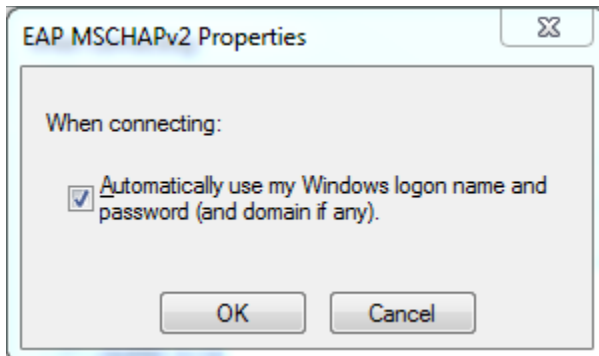
25. Be sure the following checkboxes are checked: *Connect automatically when this network is in range* and *Connect even if the network is not broadcasting its name (SSID)*.
26. Click on the *Security* tab.



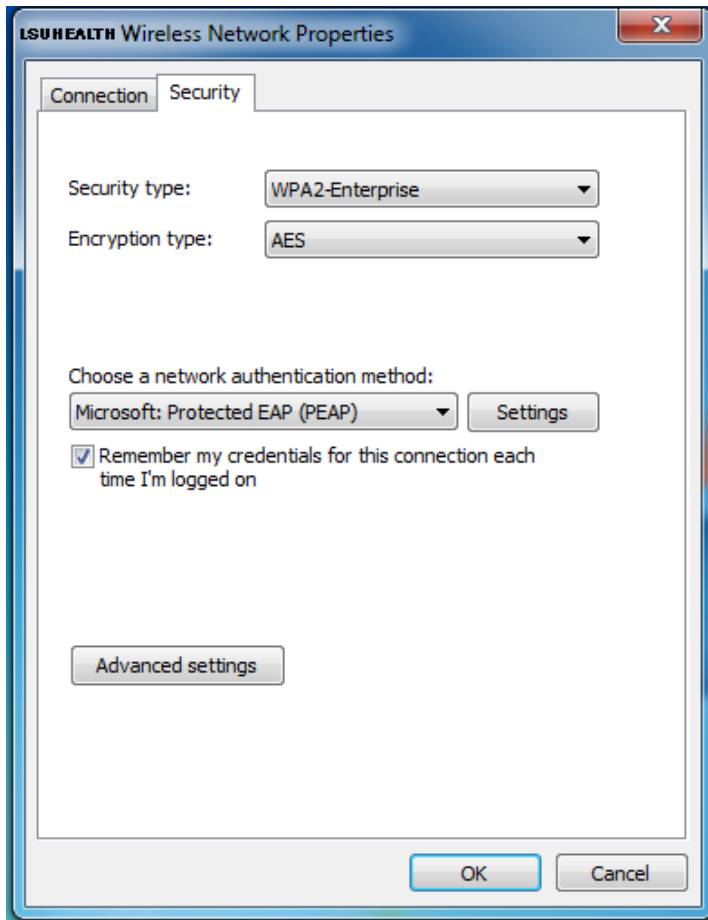
27. Be sure **WPA2-Enterprise** is set as the *Security Type* and **AES** is set as the *Encryption type*.
28. Be sure **Microsoft: Protected EAP (PEAP)** is selected under *Choose a network authentication method* and the box labeled *Remember my credentials for this connection each time I'm logged on* is checked.
29. Click the *Settings* button.



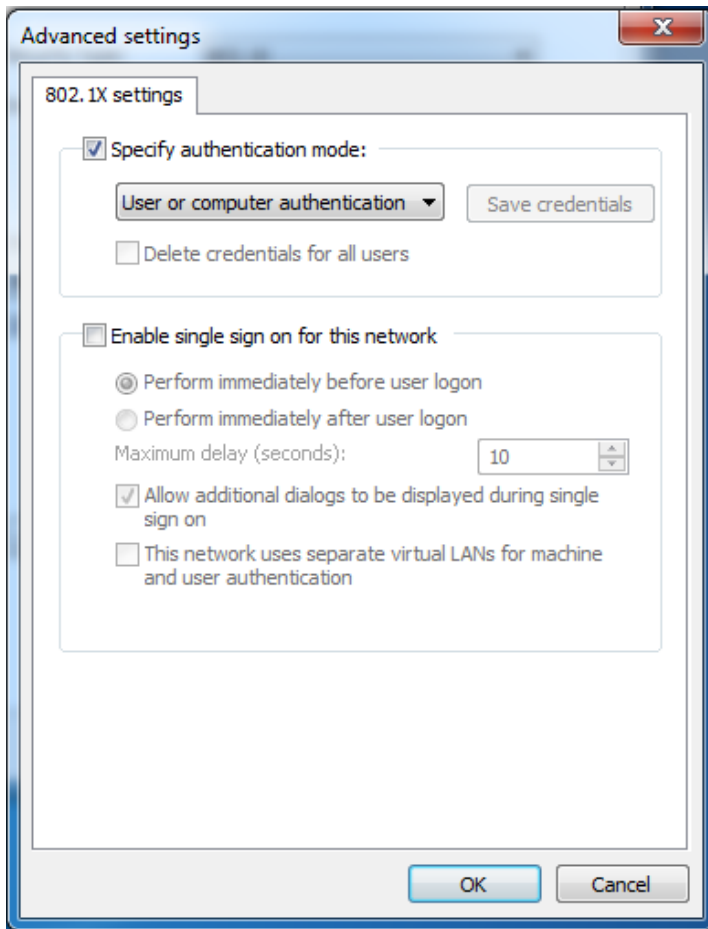
30. **Validate server certificate** should be checked at the top.
31. Under *Trusted Root Certification Authorities* (listed in alphabetical order check all references to *GlobalSign* and *Trusted Root* and *LSU Health System* and finally *shv-SH-CA1*. If you do not see these in the list, click *Cancel* all the way out and please refer to the section below to install this certificate. [Click here to jump to that section.](#)
32. Be sure **Secured password (EAP-MSCHAP v2)** is selected for *Select Authentication Method*.
33. Click the *Configure* button.




- a. If you logon to your computer using your UHSYSTEM\username and password, be sure this check box is checked for *Automatically use my Windows logon name and password (and domain if any)*.
 - b. If you use a different username and password to logon to your computer, uncheck the box for *Automatically use my Windows logon name and password (and domain if any)*. Please note, this will require you to authenticate using your UHSYSTEM\username and password, once the computer is started up, to connect to the “**Alexcscoap**” wireless.
34. Click *OK*.
35. Click *OK*.



36. Click the *Advanced Settings* button.



37. Check the box labeled *Specify authentication mode* and make sure *User or computer authentication* is selected.
38. Click *OK*.
39. Click *Close*.
40. Close the *Manage wireless networks* window.
41. You should now be successfully connected to the “**Alexcscoap**” network.
42. If your computer doesn’t automatically connect, click on the Wireless icon in the system tray that looks .
43. You will see a list of available networks.

44. Click on “**Alexcscoap**”, be sure the *Connect Automatically* box is checked (if present) and click *Connect*.



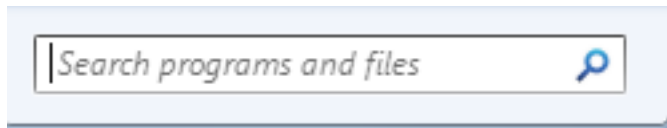
45. If you logged onto your computer using your UHSYSTEM\username and password, you should now be successfully connected to the “**Alexcscoap**” network. If you used a different username and password, your computer should prompt you for your UHSYSTEM\username and password. Be sure to enter your username in the following format: UHSYSTEM\username.

[Return to Table of Contents](#)

Installing the Wireless Certificates

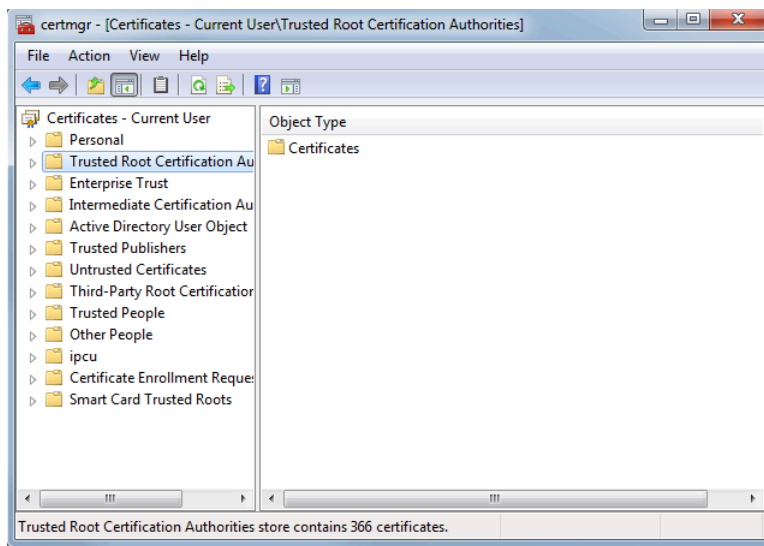
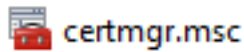
Please refer to this section only if one or more of the certificates from step 18 are missing.

1. Download the Wireless Certificate file from the Information Technology website.
2. Click on *Start* then search for **certmgr.msc** from the *Search programs and files* box in the bottom-left corner of the Start menu.

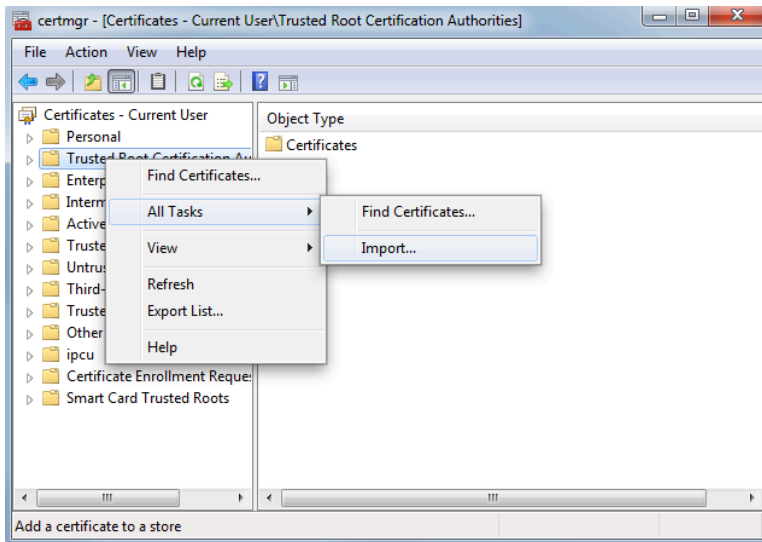


3. Open **certmgr.msc**.

Programs (1)



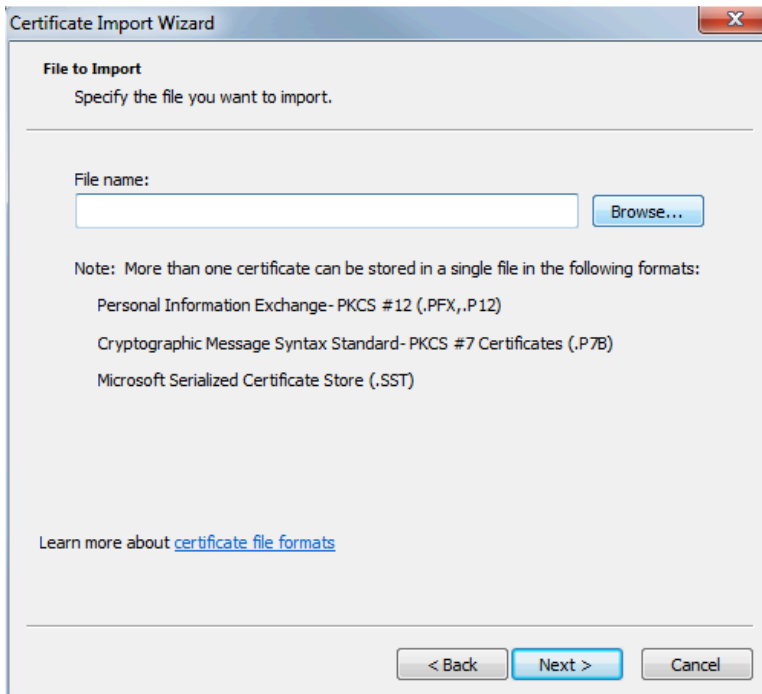
4. Right-click on *Trusted Root Certification Authorities* and choose *All Tasks* and then choose *Import*.



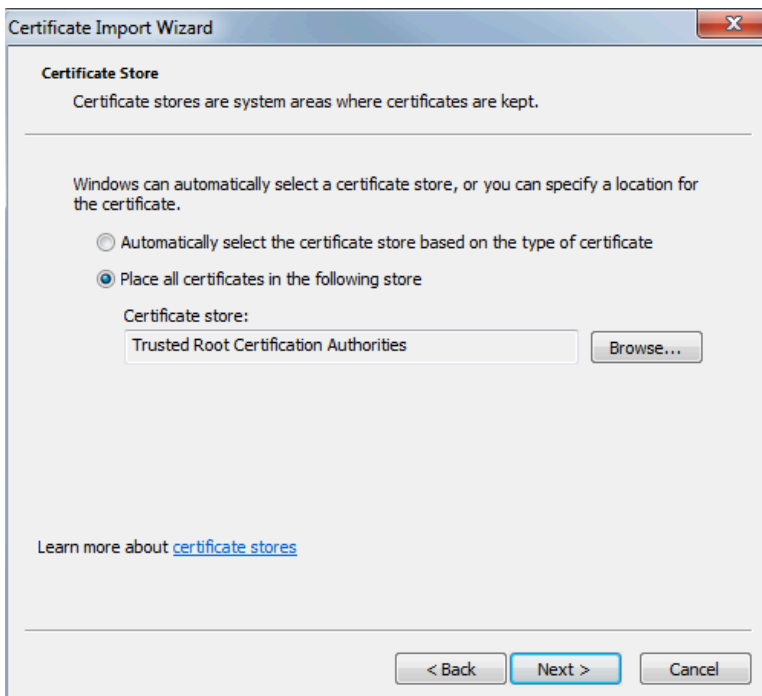
5. Click *Next*.



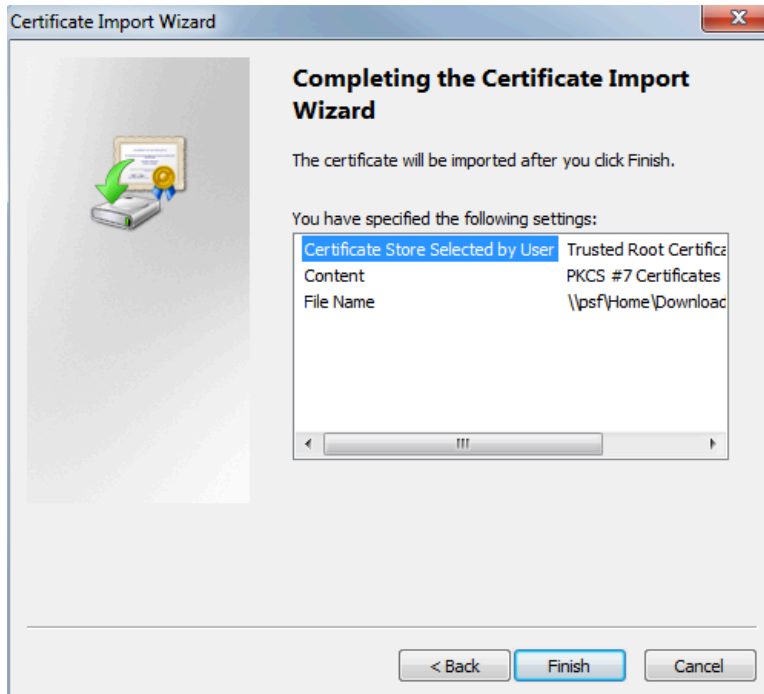
6. Click *Browse* and locate the **wirelesscertchain.p7b** file you downloaded and click *Next*.



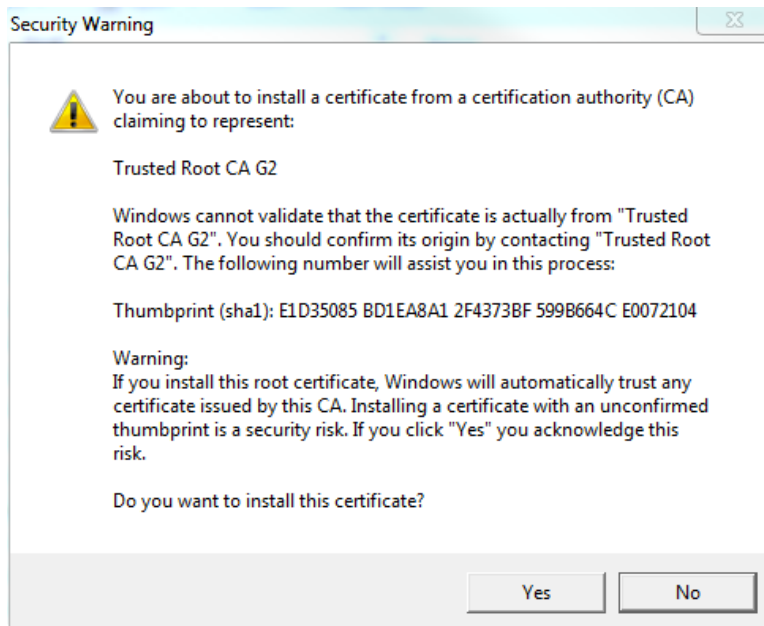
7. Click *Next*.



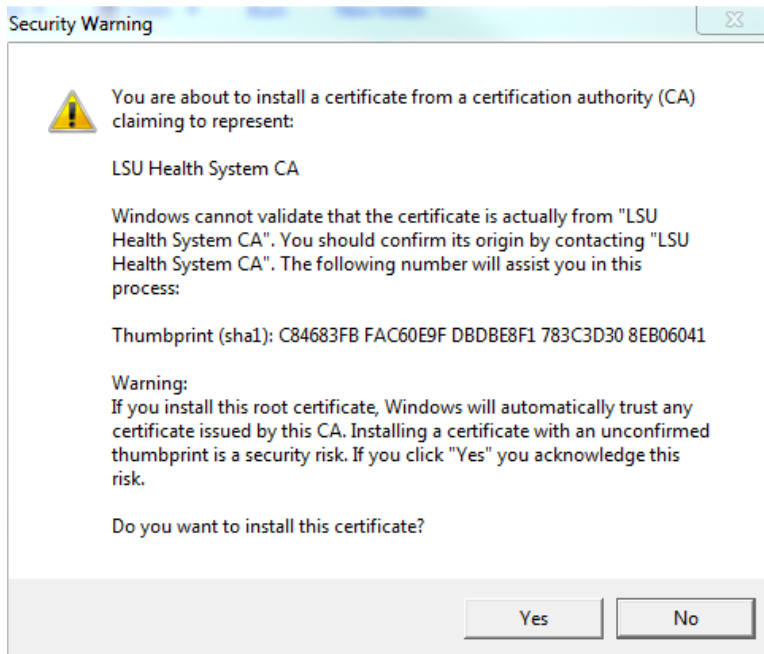
8. Click *Finish*.



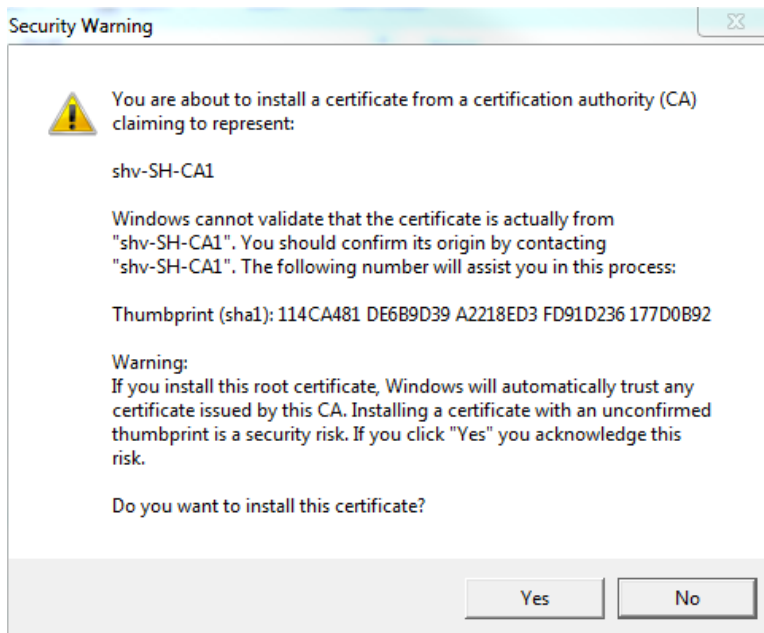
9. Click *Yes*.



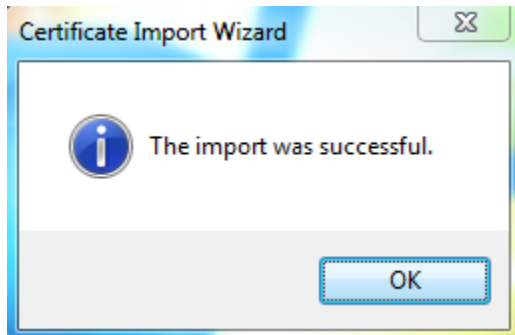
10. Click *Yes* again.



11. Click Yes again.



12. Click *OK*.



13. Close the certmgr window.

14. Proceed to the Manual Setup instructions above.

[Return to Table of Contents](#)